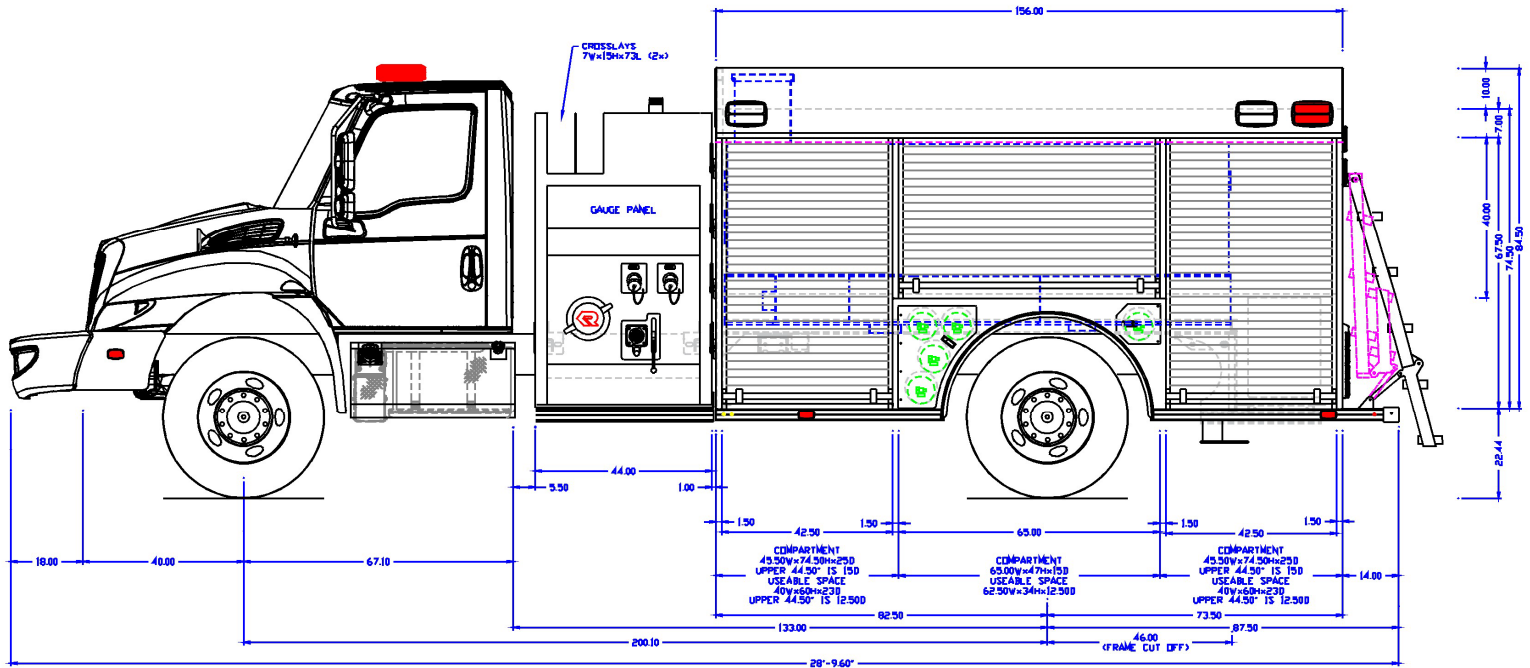


STOCK 2DR SIDE MOUNT PUMPER



1000 GAL WATER/20 GAL FOAM



CHASSIS

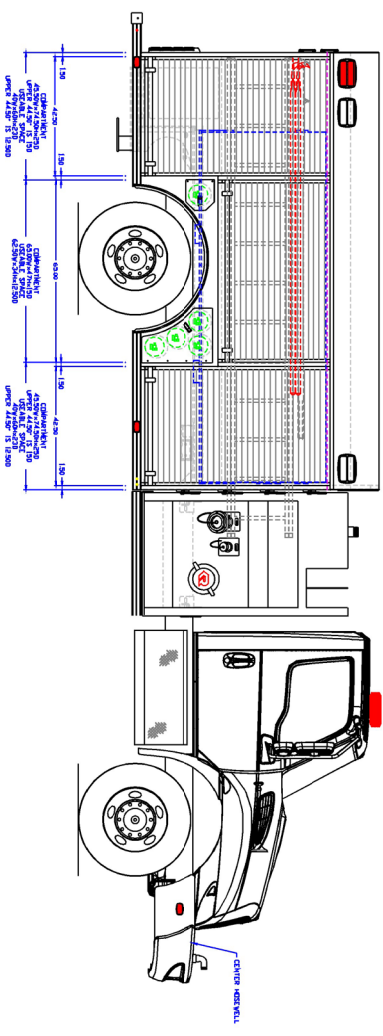
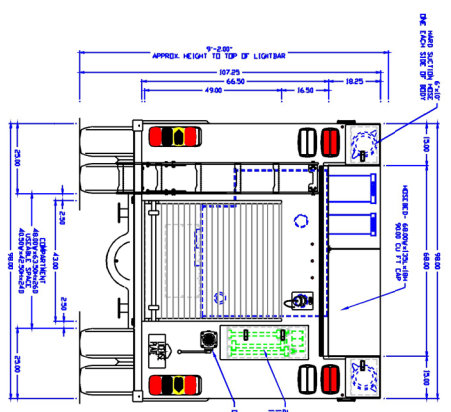
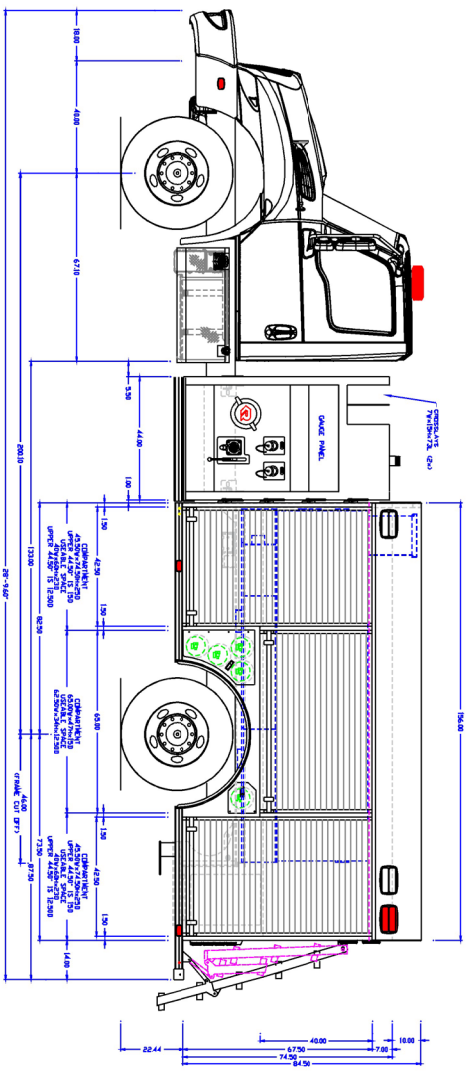
- International MV607 chassis
- Seating for two (2)
- Cummins L9 360 HP engine
- Allison 3000 EVS transmission
- Axles 14,000# front 26,000# rear
- Electronic stability control
- Michelin tires
- Polished aluminum rims
- Heated mirrors
- 9 11 SCBA seats
- 50 gallon fuel tank
- Treadplate cab step overlays
- Hood mounted air horns
- 18" front bumper extension

PUMP & PLUMBING

- Waterous CX 1500 gpm pump
- FRC InControl TGA 300 governor
- 1000 gallons water 20 gallons foam
- Two (2) crosslay pre-connects
- Left, right and rear discharges
- Front bumper pre-connect
- Foam system provisions

BODY

- Rosenbauer FXR 3/16" aluminum body
- 5 year body construction warranty
- Hot dip galvanized sub frame
- Whelen warning light package
- 74.5" high compartments
- ROM roll-up doors
- ROM V3 LED compartment lighting
- Rosenbauer EZ climb ladder at the rear
- Storage for ten (10) SCBA cylinders
- Ladder & pike pole storage in body
- Suction hose storage on body side
- Equipped with ladders, pike poles & suction hose



- NOTES:
1. OVERALL HEIGHT IS IN LOADED CONDITION. UNLOADED HEIGHTS MAY BE 4" ABOVE HEIGHTS SHOWN.
 2. DO NOT SCALE DRAWING.
 3. ALL DIMENSIONS ARE APPROXIMATE SUBJECT TO ENGINEERING CHANGES.
 4. DRAWING MAY OR MAY NOT SHOW ALL DIMENSIONS AND SPECIFICATIONS IN DETAIL SPECIFICATIONS OF THAT ITEM WITH THE FINAL DELIVERED UNIT.
 5. INCLUSION OF AN ITEM ON THE DRAWING DOES NOT CONSTITUTE THE INCLUSION OF THAT ITEM WITH THE FINAL DELIVERED UNIT.
 6. THE EFFECTIVE DOOR OPENINGS WILL BE APPROX. 2" LESS THAN THE NOTED COMPARTMENT OPENINGS FOR ROLL UP DOORS AND APPROX. 4" LESS FOR HINGED DOORS.

APPROVED BY: _____

CHASSIS:	INTERNATIONAL 2DR
PUMP:	WATERIOUS 1500 GPM
TANK:	POLY/1000/20(FOAM)
PANEL MATL:	LINE-X
COMP INTERIOR:	SPATTER COAT
MAXIMUM HEIGHT:	NONE
MAXIMUM LENGTH:	NONE
BODY WIDTH:	98"

DATE: 2-27-24

PROPRIETARY AND CONFIDENTIAL
THE INFORMATION CONTAINED IN THIS DRAWING IS THE SOLE PROPERTY OF ROSENBAUER. ANY REPRODUCTION OR TRANSMISSION OF THIS DRAWING WITHOUT THE WRITTEN PERMISSION OF ROSENBAUER IS PROHIBITED.

