

# THE BEST EQUIPMENT ADAPTS TO YOUR NEEDS



## EASY PUMP ACCESS

Whether a mid ship pump or a rear mount, our designs include large hinged (or removable) access panels for serviceability. Pump panels come in a variety of finishes including brushed, stainless or Line-X. Also offered is our Logi-Color pump panel diagram for intuitive and simple-to-use operations.

## STORAGE ABUNDANCE

Multiple compartment widths, heights and depths are available, to accommodate various water tank, hose load, and equipment storage requirements.

## 10-YEAR PAINT WARRANTY

Industry-leading, 10-year, non-prorated paint warranty.

## EASY ACCESS WIRING PANEL

A centrally located electrical panel is provided with aircraft style, waterproof connectors. Custom wiring schematics are provided with each unit built.



**EXT BODY**

EXTRUDED APPARATUS BODY

WWW.ROSENBAUERAMERICA.COM



ROSENBAUER GROUP | @ROSYFIRE | ROSENBAUERFIRE | ROSENBAUERUS

**Rosenbauer South Dakota, LLC**  
100 Third Street  
Lyons, SD 57041  
605.543.5591

**Rosenbauer Motors, LLC**  
5190 260th Street  
Wyoming, MN 55092  
651.462.1000

**Rosenbauer Minnesota, LLC**  
5181 260th Street  
Wyoming, MN 55092  
651.462.1000

**Rosenbauer Aerials, LLC**  
870 S Broad Street  
Fremont, NE 68025  
402.721.7622

ROSENBAUERAMERICA.COM | INFO@ROSENBAUERAMERICA.COM



CONTRACT #022818 | ROSENBAUER AMERICA, LLC  
DBA ROSENBAUER SOUTH DAKOTA, LLC & ROSENBAUER MINNESOTA, LLC



## HIGH QUALITY WHEEL WELL OPTIONS

Easily replaceable wheel well housings are available in four-way aluminum, painted aluminum, or stainless steel. Polished stainless fenderettes and high-density radius inner liners are standard.

## FULLY-PROTECTED WIRING AND LIGHTING

All wiring, is encased within the body extrusions so that weather, equipment and other gear won't snag or damage it. Lighting is also recessed for protection. Both lights and wiring are easily accessed via bolt-in-place panels.

## KEEP EQUIPMENT DRY AND PROTECTED

Roll-up doors open full-width and above the compartments, offering increased storage space and service of doors in the closed position. Roll-up doors are isolated in a separate compartment, eliminating moisture inside the storage space.

## CONCEALED HINGES DON'T SACRIFICE SPACE

Compartment doors feature stainless steel hinges, which are concealed and protected from the elements, and striker pins that extend out of the door opening. Offset hinges also allow doors to open the full width of the compartment.

## STORAGE FROM TOP TO BOTTOM

Recessed roll-up doors offer topside equipment mounting so that cord reels and other equipment can be attached to the ceiling for added storage.

## SAFE STEPS OFFER ACCESS TO EVERY INCH OF THE COMPARTMENT

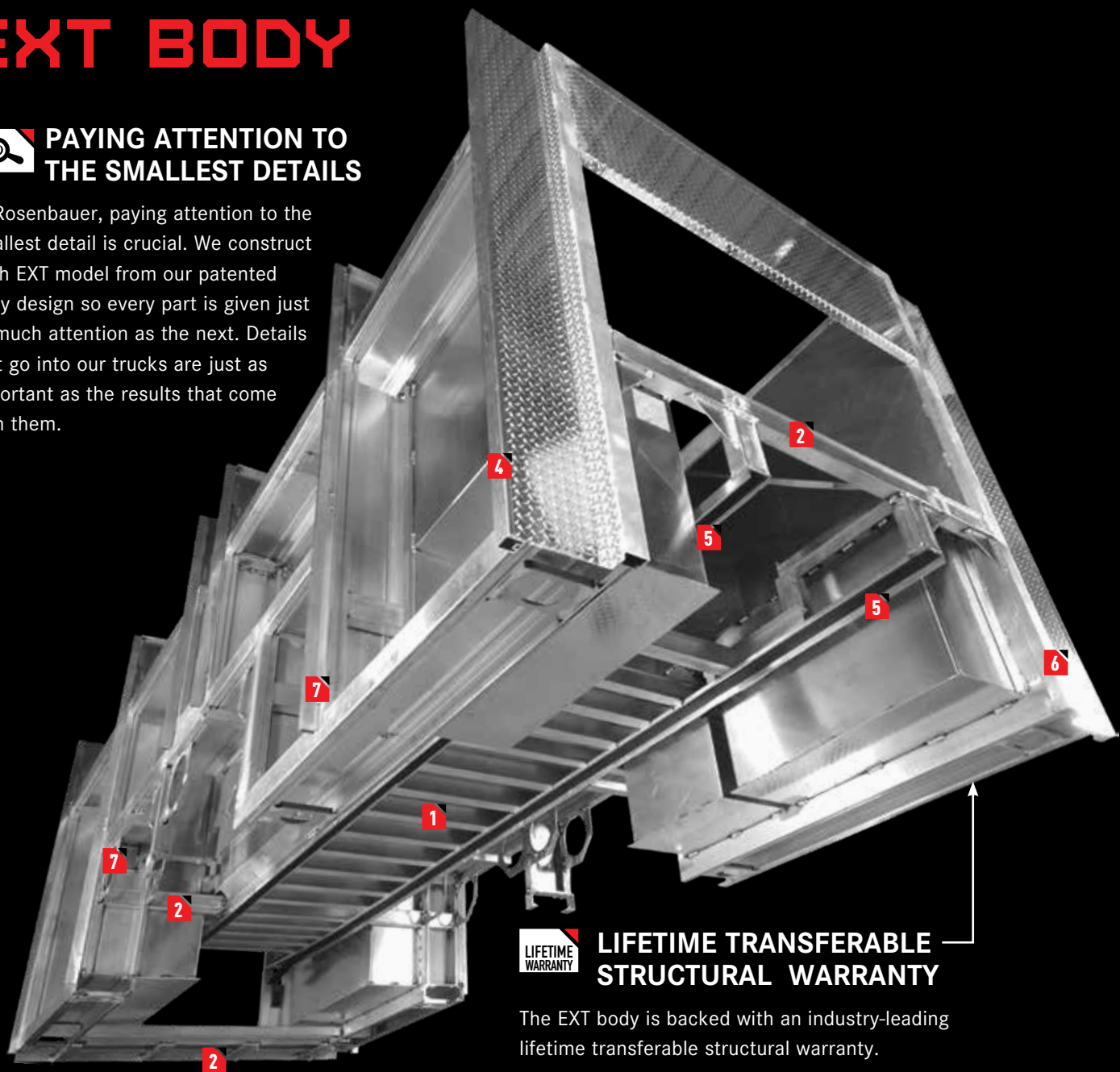
Lower safe step compartment door panels flip down to provide easy access to upper compartment storage area.



# EXT BODY

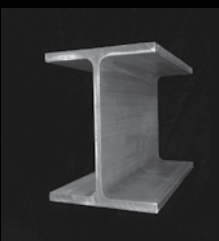
## PAYING ATTENTION TO THE SMALLEST DETAILS

At Rosenbauer, paying attention to the smallest detail is crucial. We construct each EXT model from our patented body design so every part is given just as much attention as the next. Details that go into our trucks are just as important as the results that come with them.

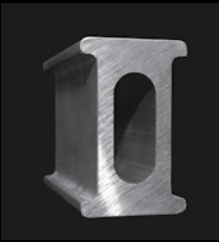


## LIFETIME TRANSFERABLE STRUCTURAL WARRANTY

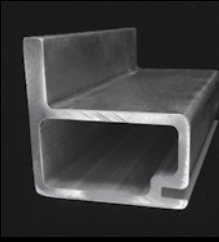
The EXT body is backed with an industry-leading lifetime transferable structural warranty.



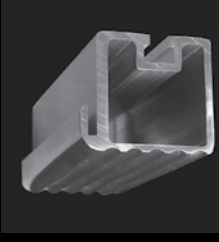
**1 Water Tank Support and Subframe (4"x3")**  
Minimum of six solid aluminum structural "I" beams with .29" flanges.



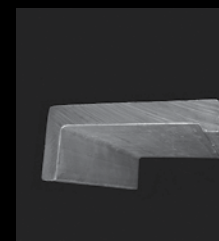
**2 Double Wall "I" Beam (4"x2.5")**  
Used throughout to support a higher stress load.



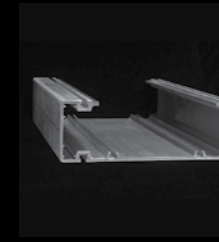
**3 Pump Module Extrusion**



**4 Front & Rear Body Corners**



**5 Main Frame Sill (4"x1.75"x5")**  
Full-length body rail made from 6061-T6 aluminum.



**6 Primary Extrusion (4" x 12")**  
Full-length vertical extrusions with .2" wall thickness used at body corners and between each compartment.



**7 "I" Channels that Don't End Where the Body Starts**

EXT model "I" channels run all the way through the truck body for extra support, while conventional body channels are simply welded to the frame. This added strength allows the body to rest on the channel, distributing weight throughout the entire beam and reducing stress at the welds.

Our body is the strongest in the industry due to a series of patented extrusions that make-up the framework of our structure. This claim is backed by an industry-leading, **LIFETIME TRANSFERABLE BODY WARRANTY**. Many of the exclusive features we are able to offer such as Safe Steps, recessed door tracks, full-width compartments, concealed door hinges, and hidden roll-up doors, are only available on this body.

## EXT STAINLESS STEEL OPTION BODY

The EXT stainless steel body matches the design of the EXT body. In lieu of extruded aluminum, the EXT body is built with formed 304 stainless steel to the similar dimensions. Multiple compartment widths, height and depths are available to accommodate the needs of the fire department. The stainless steel body design is backed by a 20-year structural warranty.



CUSTOM TOP MOUNT PUMPER



CUSTOM REAR MOUNT PUMPER



CUSTOM AERIAL



CUSTOM TOP MOUNT PUMPER